

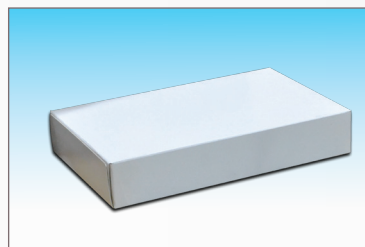
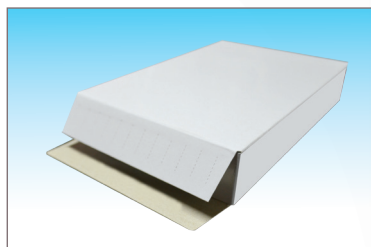
### FEATURES 設備特性

1. The machine is suitable for the product that is a small amount of diversity.  
本機台適用於少量多樣的紙盒封盒包裝。
2. Application: food, stationary, cosmetics and peripheral products, etc.  
適用範圍：食品、文具、化妝品和電腦週邊產品等包裝彩盒。
3. Compact machine is designed for saving space and easy operation.  
機台設計體積小不佔空間、調速方便與操作簡單。
4. Equipped with high quality hot melt applicator. Sealing box by hot melt adhesive is not only cost-saving but also friendly-environment.  
配備高品質的熱熔膠機貼合，節省成本而且環保。
5. Pumping by dual-action piston pump. Coating area and length are adjustable.  
熱熔膠機採用活塞幫浦出膠，塗部大小及長度可自由調整。
6. Appearance of Sealed Box: Both of upper and bottom flaps are shaped precisely without any abrasion and surplus glue.  
貼合外觀：產品貼合後外觀無刮損現象，封盒上下貼舌對齊、平整、無膠水外露。



### SPECIFICATIONS 設備規格

SPEC 規格	UNIT 單位	
Machine Speed(Manual) 機械速度(人工放料)	pcs/min	15
Machine Dimensions (L x W x H) 機器尺寸(長 x 寬 x 高)	Cm	205 x 65 x 160
Box Dimensions (L x W x H) 紙盒尺寸(長 x 寬 x 高)	Cm	Apporx. 20 x 13 x 3.5
Horse Power 馬力	HP	1/2
Weight 重量	Kg	Apporx. 360
Transmission system 傳動系統	Inverter Motor	
Coating system 上膠系統	HS1104 Hot Melt Applicator	
Power Requirement 電力需求	220V AC, 13A, 3Φ	



**Tainan Headquarters 台南總公司**

No. 8, Keji 1st Rd.,  
Annan District, Tainan 70955, Taiwan  
70955 台南市安南區科技一路 8 號 (科工區)  
TEL: +886-6-3842889 FAX: +886-6-3842868

**Taichung 台中**

4F-4, No. 82, Daying W. 1st St.,  
Nantun District, Taichung 40865, Taiwan  
40865 台中市南屯區大英西一街 82 號 4 樓之 4  
TEL: +886-4-24739593 FAX: +886-4-24714414

**Taipei 台北**

1F, No. 25-1, Hami St.,  
Datong District, Taipei 10370, Taiwan  
10370 台北市哈密街 25 之 1 號 1 樓  
TEL: +886-2-25933744 FAX: +886-2-25923570

**Suzhou 蘇州**

Building No. 28, Li Tang Road, Kua Tang Town, Su Zhou  
Industrial Park, Su Zhou City, Jiang Su Province, China  
江蘇省蘇州市園區跨塘鎮蠡塘路逸苑別墅 28 棟  
TEL: +86-512-67865516 FAX: +86-512-68557601

**Dongguan Hwang Sun Industrial Co., Ltd.**

**東莞皇尚實業有限公司**

Behind the Dongying Restaurant (Catty corner from No.  
36 Liaoxia Rd., Liaoxia Ave.), Provincial Highway S256,  
Liaoxia Village, Houjie Town, Dongguan 523960, China  
東莞市厚街鎮寮廈村 S256 省道旁東盈酒店後  
(寮廈大道寮廈路 36 號斜對面)  
TEL: +86-769-81636099 FAX: +86-769-81636399